

PLATTE COUNTY, MISSOURI

PARK SYSTEM MASTER PLAN

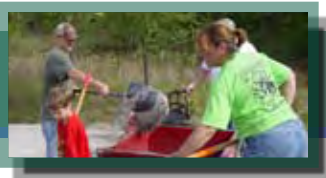
MAY 2009

“...every county –and particularly those counties around large centers of population – is obligated to provide the best it can for the recreation and health of its citizens, a system of parks and lakes...”

Harry S. Truman



explore **enjoy**
experience
Platte County Parks!



Acknowledgements

COUNTY COMMISSIONERS

Presiding Commissioner Betty Knight
First District Commissioner Kathy Dusenbery
Second District Commissioner Jim Plunkett

BOARD OF PARK COMMISSIONERS

Bill Hillix, Chairman	Dick Stephens, Vice Chairman
Neil Davidson, Secretary	Louis Buntin, Member
Laurie Burgess, Member	Julie Rule, Member
Paul Norman, Member	

CITIZENS TEAM

Margie Maasen, Friends of Parks	Mike Lacey, Kansas City
Valerie McCaw, Kansas City	Trish Stinnet, Platte City
Karlton Nash, Dearborn	Bobby Hensley, Edgerton
Doug Lee, Camden Point	John Pasley, Weston
Ron Carlson, Riverside	Wayne Mathisen, Parkville
Lowell Hartell, Unincorporated	Frank Weatherford, Kansas City

STEERING COMMITTEE

Betty Knight	Jim Plunkett
Kathy Dusenbery	Laurie Burgess
Brian Nowotny	Jim Kunce
Noel Challis	Dick Horton

THE CONSULTANT TEAM

Dick Horton, BWR	Gary Harden, BWR
Scott Walters, BWR	Ron Vine, ETC/Leisure Vision



Blank Page



Table of Contents

Executive Summary **1**

Introduction 1

Platte County Profile 1

Review Process of Park Facilities and Management Policies 2

Citizen Involvement Process 3

Goals 4

Vision **5**

Introduction 5

Vision 5

Relationship to Platte Profile 5

Department History **7**

Introduction 7

Primary Responsibilities 8

Parks 8

Trails 8

Recreation Facilities 8

Market Analysis **9**

Introduction 9

Market Analysis: Population Trends 9

Market Analysis: Population by Age 10

Market Analysis: Population by Ethnicity 12

Market Analysis: Population by Income 13

Market Analysis: Population by Household Type 14

Market Analysis: Population by Educational Attainment 15

Market Analysis: Peer Review (2008 Data) 17

Park System Analysis **19**

Introduction 19

General Observations 19

Park System Mapping 25

Community Involvement Process **37**

Introduction 37

The Approach 37

Citizen Input **41**

Citizen Survey 41

Focus Groups 44

First Open House 45

Second Open House 48

Citizen Input Summary 50

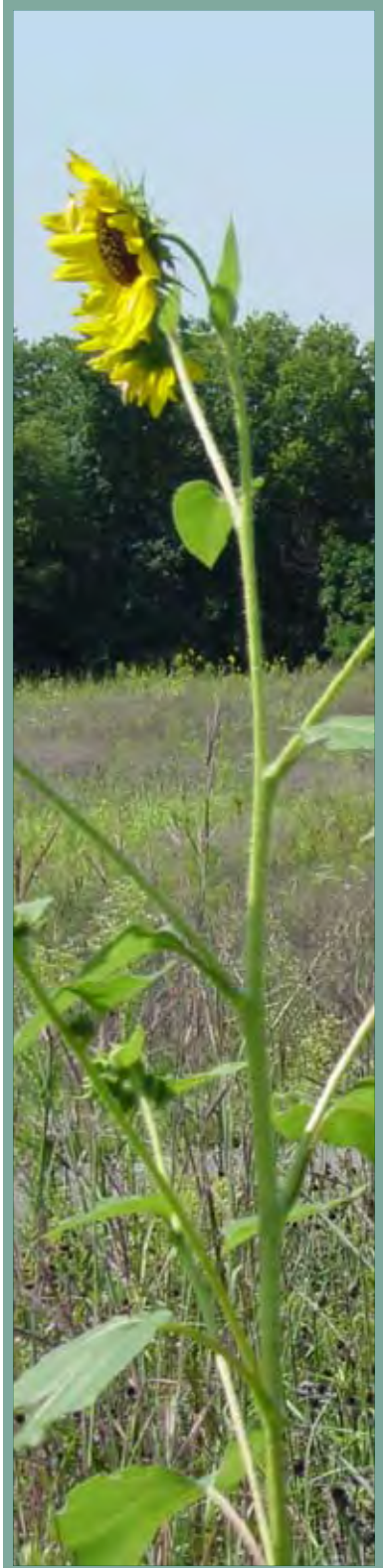


Table of Contents



Goals and Action Strategies	51
Introduction	51
Guiding Principle: Protect Natural Resources	52
Guiding Principle: Provide Health and Wellness Opportunities	54
Guiding Principle: Create Safe Recreation Places for Children	59
Sustainable	61
Collaborative	62
Citizen-Focused	63
Implementation	65
Introduction	65
Methodology for Prioritization of Our Resources	65
Resource Allocation Chart	66
Planning Scenario	66
Evaluations Filters and Funding Categories	67
Estimate of Project Costs	71
Open Space Plan	73
Introduction	73
Protected Open Space Target	74
Locations of Importance	74
Priority Opportunities	74
Definitions	75
Introduction	77
Partnerships	77
Findings	78
Summary	80
Shiloh Springs Golf Course	83
Introduction	83
Analysis and Recommendations	83
Summary	84



Table of Contents

APPENDICES

[A – Park System Maps](#)

[B – All Parks Inventory Sheets](#)

[C – Park Improvement Opinion of Probable Costs Spreadsheet](#)

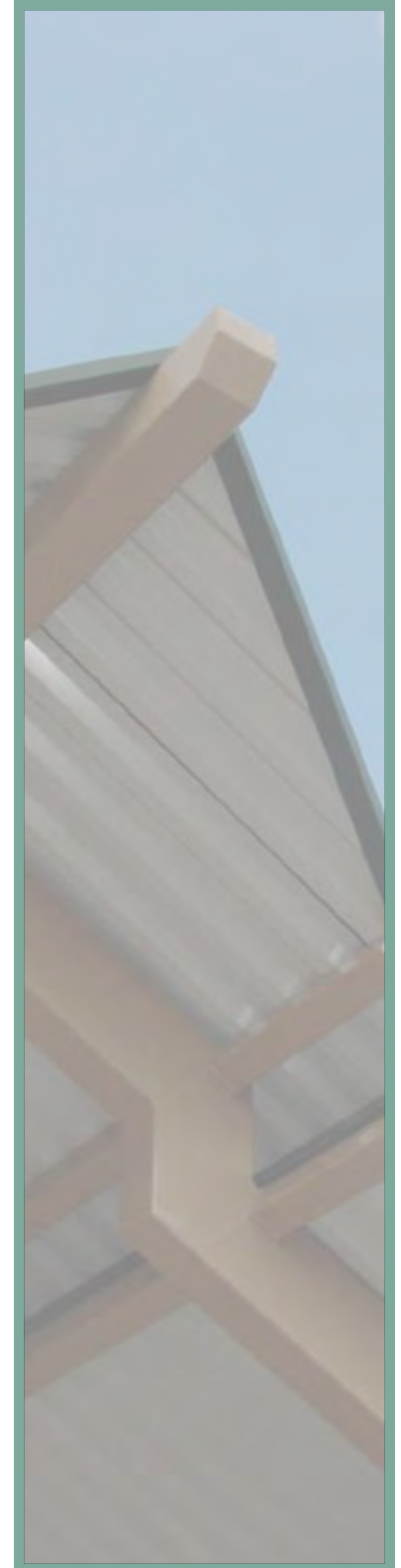
[D – First Citizen Survey Graphs](#)

[E – Second Citizen Survey Graphs](#)

[F – Focus Group Summaries](#)

[G – County Outreach Grant Recipient Spreadsheet](#)

[H – 2009 Strategic Plan for Shiloh Springs Golf Club](#)





Blank Page